

TOSATO

1928

FW 2026-2027



A woman with long, wavy brown hair and light-colored eyes is wearing a thick, brown fur hooded coat. The fur is dense and has a rich, warm brown tone. She is looking slightly to the left of the camera with a neutral expression. The background is a plain, light color.

TOSATO
1928

FW 2026-2027

SABLES



PD173V



Lavender Canadian Sable jacket
Horizontal motif with hood



PD306



Tortora Grey Russian Sable jacket
Horizontal motif



PD306



Antracite Russian Sable jacket
Horizontal motif



PD322



Tortora Grey Russian Sable jacket
Horizontal motif



PD322



Antracite Russian Sable jacket
Horizontal motif



PD346



Lavender Russian Sable vest
Horizontal motif



PD346



Dark Russian Sable vest
Horizontal motif



PD373



Antracite Russian Sable jacket
Horizontal motif



PD373



Tortora Grey Russian Sable jacket
Horizontal motif



PD374



Dark Russian Sable jacket
Vertical and Horizontal motif



PD375



Dark Russian Sable vest
Horizontal motif



PD382



Dark Russian Sable vest
Vertical full skin motif



PD384B



Tortora Silvery Russian Sable jacket
Full skin vertical motif



PD384B



Rodio Russian Sable jacket
Full skin vertical motif



PD386



Golden Russian Sable vest
Horizontal motif



PD386



Dark Russian Sable vest
Horizontal motif



PD393



Lavender Russian Sable jacket
Horizontal motif with hood



PD408



Lavender Russian Sable jacket
Horizontal motif



PD409



Lavender Canadian Sable jacket
Horizontal motif



PD413



Dark Silvery Russian Sable jacket
Horizontal motif



PD414



Reversible jacket
Dark Russian Sable
Horizontal motif



PD415



Reversible jacket
Dark Russian Sable
Horizontal motif



PD420



Lavender Russian Sable vest
Diagonal motif



PD420



Dark Russian Sable vest
Diagonal motif



PD421



Reversible vest
Lavender Russian Sable
Horizontal motif



PD422



Russian Sable scarf with Cashmere



PD423



Lavender Silvery Russian Sable jacket
Horizontal motif



PD424



Tortora Russian Sable vest
Vertical and horizontal motif



PD425



Reversible hooded vest
Dark Russian Sable
Diagonal motif



PD428



Antracite Russian Sable jacket
Horizontal motif



PD428



Tortora Russian Sable jacket
Horizontal motif



PD429



Dark Russian Sable vest
Vertical full skin motif with
Wool and Cashmere Knit on the back



PD430



Dark Russian Sable jacket
Vertical full skin motif



PD431



Lavender Russian Sable jacket
Vertical full skin motif



PD432



Extra Dark Russian Sable vest
Horizontal motif with hood



PD433



Antracite Silvery Russian Sable jacket
Horizontal motif
Reversible in cashmere



PD434



Lavender Russian Sable jacket
Horizontal motif with hood



PD437



Dark Silvery Russian Sable jacket
Vertical full skin motif



PD438



Dark Russian Sable vest
Vertical full skin motif



PD439



Dark Russian Sable jacket
Vertical full skin motif



PD446



Antracite Silvery Russian Sable vest
Horizontal motif
Reversible in cashmere



PD446



Lavender Russian Sable vest
Horizontal motif
Reversible in cashmere



PD447



Antracite Silvery Russian Sable vest
Horizontal motif with hood
Reversible in cashmere



PD447



Lavender Russian Sable vest
Horizontal motif with hood
Reversible in cashmere



PD448



Dark Russian Sable jacket
Vertical full skin motif



TOSATO
1928

FW 2026-2027

MINKS



PD406



Salvia Mink jacket
Horizontal motif



PD407



Milk Mink jacket
Horizontal motif



PD427



Blackgross Mink vest
Vertical full skin motif with
Wool and Cashmere Knit on the back



PD435



Purple Mink jacket
Vertical motif



PD436



Reversible hooded vest
Green Mink
Horizontal motif



PD440



Brown Mink jacket
Vertical motif



PD441



Grey Mink jacket
Horizontal motif



PD442



Camel Mink vest
Vertical motif



PD443



Reversible vest
Milk Mink
Horizontal motif



PD443



Reversible vest
Green Mink
Horizontal motif



PD444



Reversible hooded jacket
Milk Mink
Horizontal motif



PD445



Pink Mink jacket
Horizontal motif



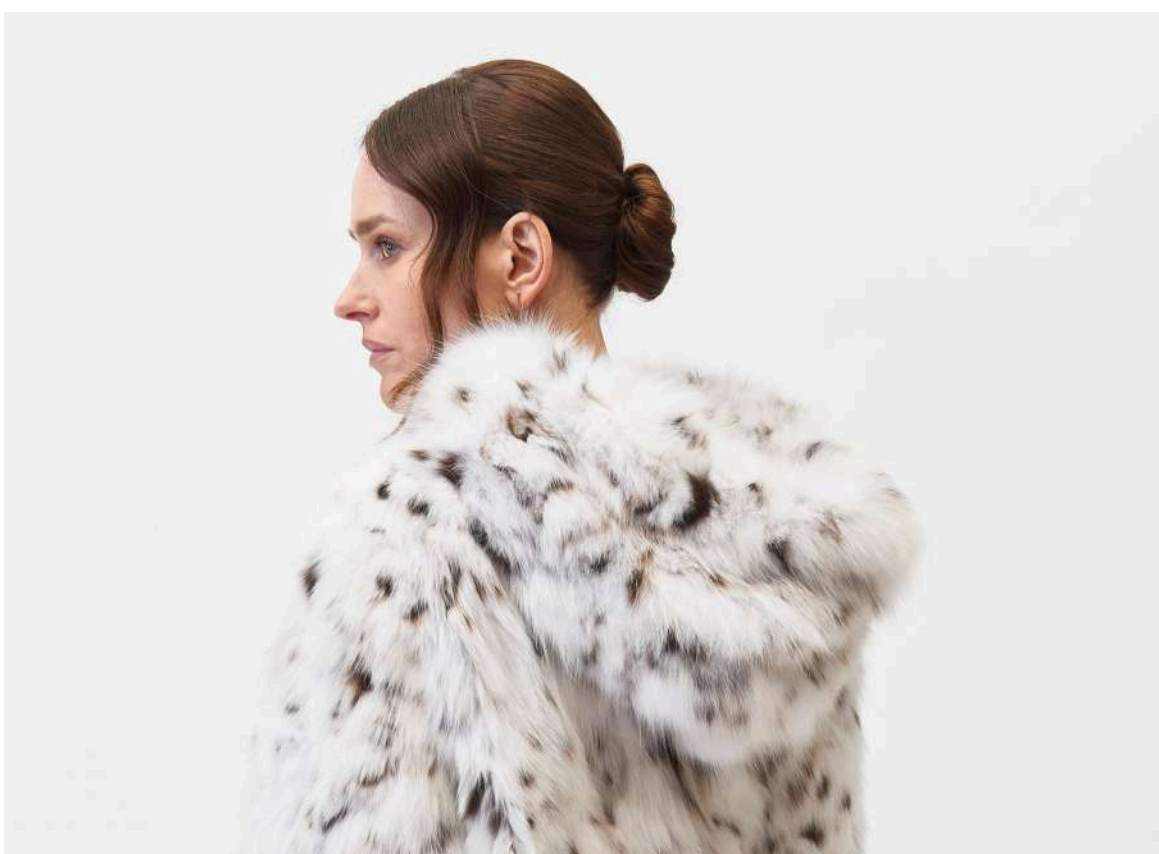
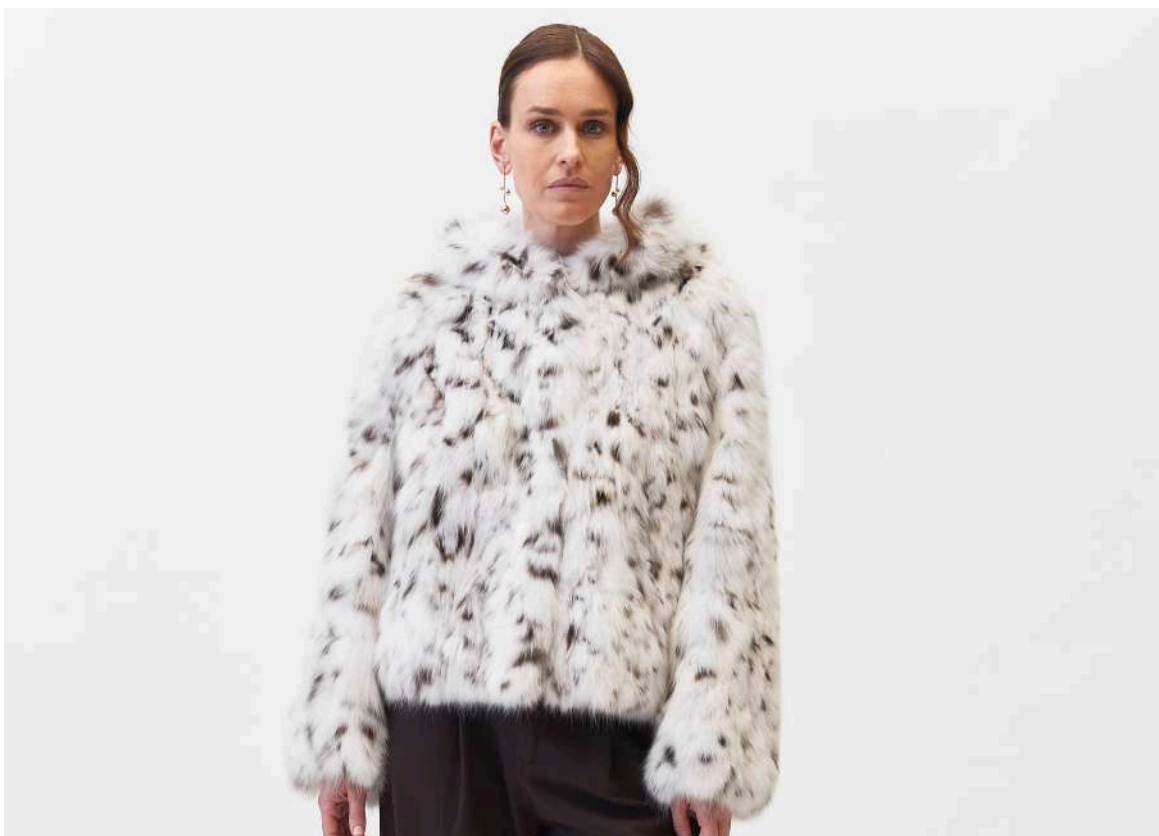
TOSATO
1928

FW 2026-2027

CHINCHILLA
CASHMERE LAMB
XIANGAO
LYNX



PD350



Lynx jacket with hood



PD419



Chinchilla vest
Horizontal motif with
Cashmere on the back



PD451



Green Cashmere Lamb vest



PD451



Purple Cashmere Lamb vest



PD452



Camel Cashmere Lamb jacket



PD452



Pink Cashmere Lamb jacket



PD453



Brown Xiangao vest

TOSATO

1928

Made in Italy

Via Marsala 38, 35122 Padova (PD), Italy

Phone: 0039 049651366

Email: info@tosato1928.it

Website: www.tosato1928.it

Instagram: [@tosato1928](https://www.instagram.com/tosato1928)

Produced and distributed by:

PADOVAFURS

Via Marsala 38, 35122 Padova, Italy

Phone: 0039 049651366

Fax: 0039 049656126

Email: info@padovafurs.it

Website: www.padovafurs.it